

***International Conference on
Palaeogenomics
(ICP) 2026***



23-26 June 2026

Practical Information Booklet

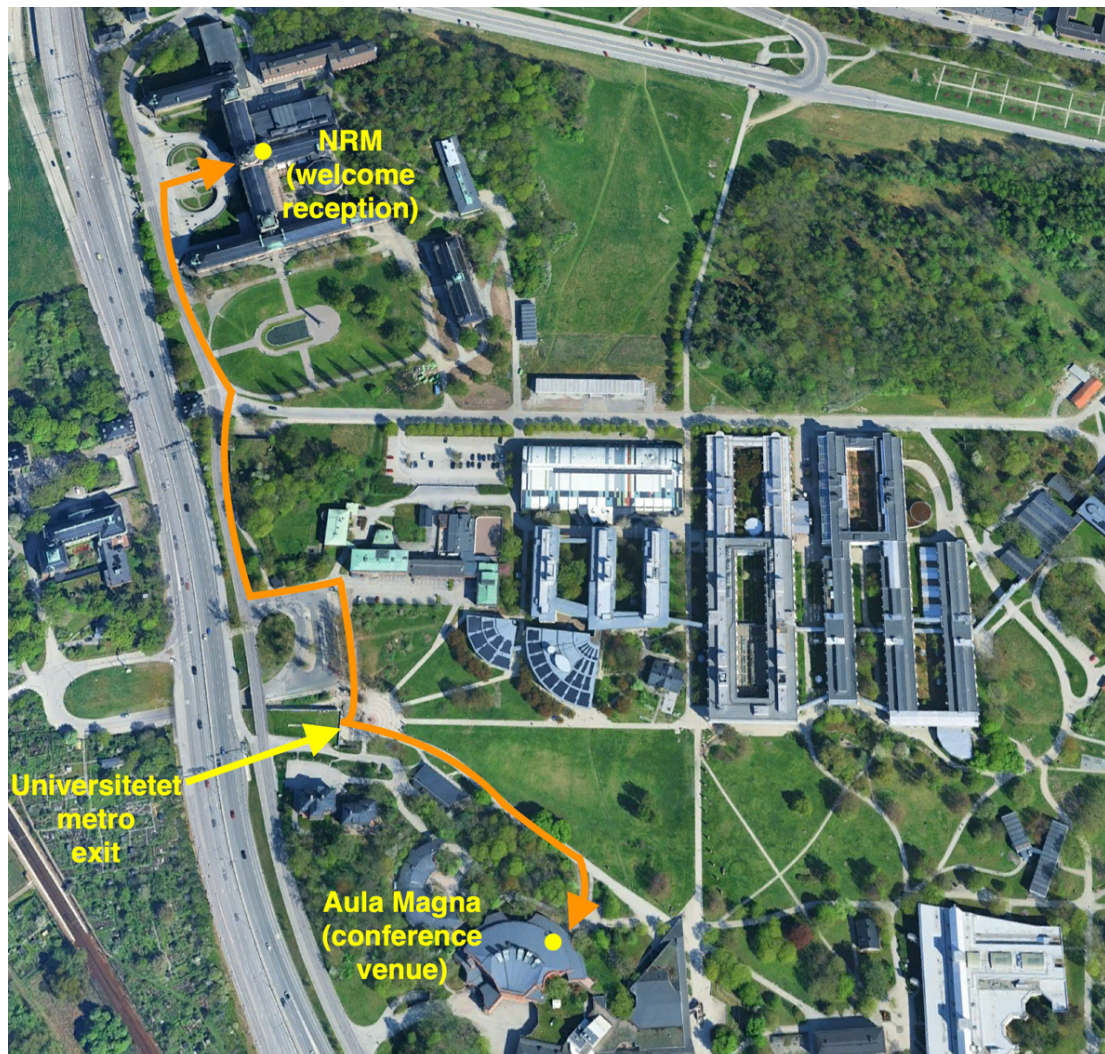
Key locations:

Event	Venue	Google Maps	what3words	Lat-Long
Conference venue	Aula Magna	https://maps.app.goo.gl/8fNnfoo1U1MTsC8E8	///email.hilltop.wording	59.36407, 18.05711
Welcome reception	Swedish Museum of Natural History (NRM)	https://maps.app.goo.gl/pc2B6MbcXgZArMNI6	///feel.magazine.trio	59.36898, 18.05130
Conference dinner	Stockholm City Hall	https://maps.app.goo.gl/9rMesm9pZMB6BsWM8	///dairies.gloves.trousers	59.32754, 18.05497

Directions to the Welcome reception and Conference venues

From the Central Railway Station (T-Centralen): take the T-bana T14 train (red line) northbound towards *Mörby Centrum* (**not** towards *Ropsten*). Travel for four stops to *Universitetet* metro station.

Below is an overview of the Stockholm University campus and Swedish Museum of Natural History (NRM), with yellow circles showing key conference locations. Routing arrows from *Universitetet* metro station are in orange.



Directions to the Conference dinner venue (City Hall)

From **Universitetet** metro station: take the T-bana T14 train (red line) southbound towards *Fruängen/Liljeholmen*. Travel for four stops to *T-Centralen* metro station. Exit the station via Sergels Torg and take the routing arrow shown below in orange. Note that *T-Centralen* is rather expansive so be aware that you may appear above ground at a different spot than that given below.



Important Practical Information

Getting around Stockholm

The easiest way to get around is via the Stockholm metro and bus system (SL). Single tickets last 75 minutes, although multi-day tickets are also available. Tickets can be purchased either by tapping your credit/debit card or through the SL-app (if you do the latter, make sure to activate your ticket before travel): <https://sl.se/en/fares-and-tickets/smart-phone-ticket-app>. The SL-app can also be used to plan your trip and provide information about potential delays and alternative routes.

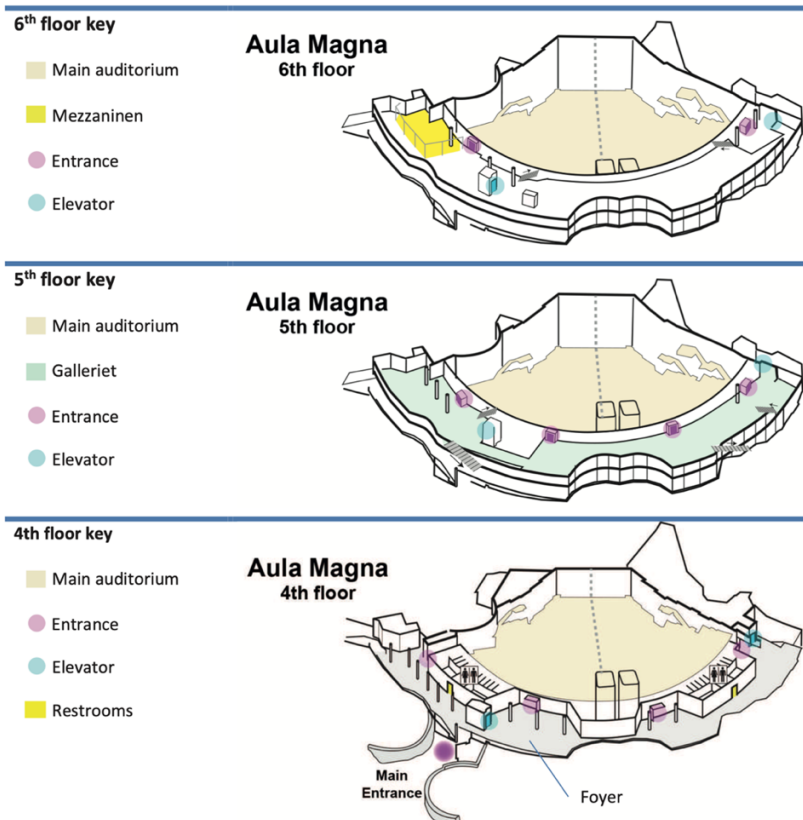
There are also rideshare options available (ie. Uber, Bolt), as well as taxis. If taking a taxi, we recommend only using *Taxi Stockholm* (tel. +468150000; web: <https://www.taxistockholm.se/en/booking/>).

Food options on the Stockholm University campus

These are limited at this time of year and so we suggest heading into the city for dinner after the poster sessions on Tuesday and Wednesday. Lunch is provided and snacks are available at the Welcome reception and poster sessions. The three campus food options are Pressbyrå and 7eleven at the entrance to *Universitetet* metro station, and Restaurang PicNic, which is located on the route from *Universitetet* metro station to Aula Magna.

Luggage storage

There will be luggage storage available at the main conference venue, Aula Magna. From Tuesday to Thursday this will be at the Information desk (see image on page 6). On Friday, this will be in the Mezzanine area on the 6th floor (second floor relative to the main entrance, see image below). Note that there is also luggage storage available at the Central Railway Station.



Press and Social Media

Journalists may attend ICP2026, including the Welcome Reception. Since many talks and posters contain unpublished findings, media representatives cannot report scientific findings presented at the conference without permission from the presenter. The official BlueSky account for ICP2026 is *@palaeogenomics.bsky.social* with the hashtag *#ICP2026*.

Code of Conduct

ICP2026 operates under a formal Code of Conduct that applies to all participants, organisers, volunteers, sponsors and exhibitors. The Code of Conduct is available on the conference website [here](#).

Registration

This will be at Aula Magna only. From Monday 12:00 to 18:00 until Tuesday 09:00 to 12:00, there will be a main registration desk (see image on page 6), and badges will be divided according to surname into several batches so that delegates with different surnames go to different tables to pick up their badge and conference bag.

At 12:00 on Tuesday, registration moves to the small room in the Aula Magna foyer with sliding service window (see image on page 6). This room will serve as a joint information and registration desk, and will be staffed by two volunteers during mornings (08:00-09:00), as well as during coffee breaks and lunches.

On-site registration costs 2000 SEK including VAT per day, and is paid online by credit card by scanning a QR code available in the information desk. Those who register on-site get a hand-written badge. Day registration does not include lunch.

Welcome reception

This will be held at the Swedish Museum of Natural History from 18:00 to 21:00. The Welcome Reception will start in the main ticket hall of the museum (see first image above), and at 18:30 the museum director Lisa Månsson will give a welcome speech. Drinks and finger food will be served. After the welcome speech, if the weather is good, the reception will also expand into the inner courtyard of the museum.

Conference dinner

Please make sure to arrive at the conference dinner venue at City Hall by 18:45. This gives one hour between the end of the Thursday talks at Aula Magna and the conference dinner starting at City Hall. Your paper ticket, which will be given to you during registration, is required for entry. There is no formal dress code. If possible, try not to bring bags to the venue as these are not allowed inside if larger than A4. However, there is a cloakroom available. See above for suggested directions to the conference dinner venue.

General Remarks and Prize Awards

These will be at 11:30-12:00 on Friday and given by Love Dalén. They will include general remarks and a prize awards ceremony for best student and best postdoc posters. The prize selection will be determined by a committee consisting of external senior researchers attending ICP2026.

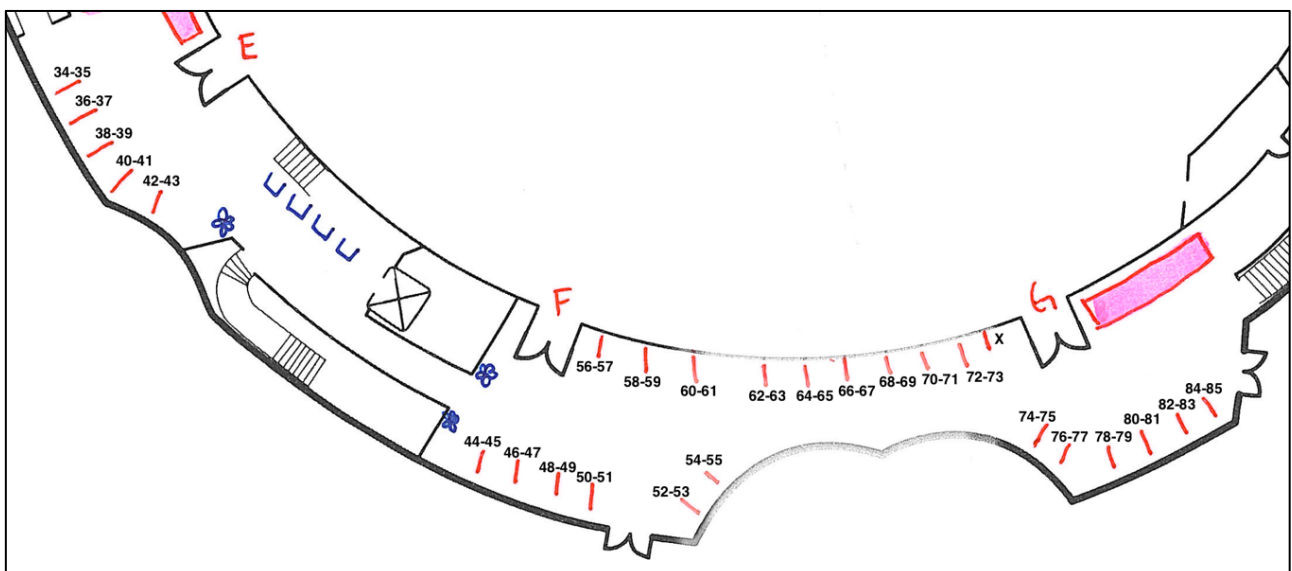
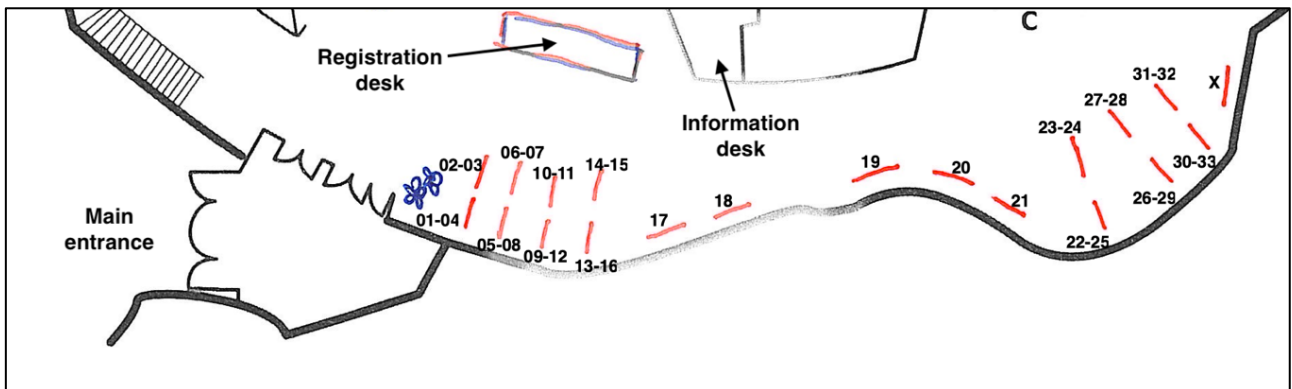
Talks

Please keep to your allocated time to ensure the conference runs smoothly. Talks should be in Powerpoint format and uploaded at least 24 hrs in advance. The upload link is <https://su.drive.sunet.se/s/MtWJTqgpSMAFesf>. Videos included in powerpoints should also be uploaded separately. If talk upload does not work, speakers should approach the information desk in order to get help uploading the talk via a USB stick.

Posters

Please put these up at your designated spot during coffee breaks or the lunch break of the day you are due to present. If your poster number is in the 100-series, then your poster presentation is on Tuesday. If in the 200-series, then you present on Wednesday. Please remove your poster at the end of your session. Wine and snacks will be served during the poster sessions.

The locations of the posters are given below. The annotated poster numbers ignore the first digit and are given in front-back of the poster board format (e.g. 01-04). Posters 01 to 33 are on the 4th floor (upper image; ground floor relative to the main entrance) and 34 to 79 are on the 5th floor (lower image; first floor relative to the main entrance).



Suggested Restaurants and Bars in Stockholm

For food and drinks after the conference sessions, we primarily recommend the Slussen area (tube station Slussen, red line). Here, there are several large rooftop bars with excellent views over the water and the Old Town, including **Mosebacketerrassen**, **Pelago**, and **Freyja + Söder**. A short walk across the Slussen bridge, there are also numerous bars and restaurants in the Old Town (Gamla Stan), for example **The Temple Bar** and **Karamell**. For beer and whisky connoisseurs, there are also several pubs in this area that have a good drinks selection, including **Oliver Twist**, **Akkurat**, and **Zum Franziskaner**.

As a second option, a bit closer to the conference venue and with a decent capacity both indoors and outdoors (but without the scenic views), we can also recommend the Stureplan area (tube station *Östermalmstorg*, red line). Popular places around Stureplan include **Omnipollos Flora**, **Sturehof**, **Riche**, and the **Bull and Bear Pub**.

Slussen area:

Mosebacketerrassen: <https://maps.app.goo.gl/ShjSfrwSp7WkxMeu6>

Pelago: <https://maps.app.goo.gl/AbLtYgaRKF9DTBNa7>

Freyja + Söder: <https://maps.app.goo.gl/4nndBLfEv1yPvFgH6>

The Temple Bar: <https://maps.app.goo.gl/mBYiUY9f8WgoiErB9>

Karamell: <https://maps.app.goo.gl/JasPaxMsNVhPbcx36>

Oliver Twist: <https://maps.app.goo.gl/Pyr4FaH9TyhkSdst9>

Akkurat: <https://maps.app.goo.gl/8CUChL1ty3DvhaQw9>

Zum Franziskaner: <https://maps.app.goo.gl/UKn3yYG9bww9roGZ6>

Stureplan area:

Omnipollos Flora: <https://maps.app.goo.gl/HSFYttqJe24rEhDy5>

Sturehof: <https://maps.app.goo.gl/FnScBGNpVJuM3sLN7>

Riche: <https://maps.app.goo.gl/dM5FSgxe9efCG3bM8>

The Bull and Bear: <https://maps.app.goo.gl/V3AXS6KkdmQX1N6u9>

Others:

Portal bar at Odenplan: <https://maps.app.goo.gl/QjrQyB45aTBgMdGbA>

TAK at Centralen: <https://maps.app.goo.gl/m6uFRtzeX7YVvydp9>